

How Do I... Use Remote Desktop Client to connect to my workstation

DESCRIPTION:

This procedure will walk you through the Remote Desktop connection to a UWO workstation.

PROCEDURE:

1. Open the Remote Desktop Connection Client (see Fig. 1)
 - a. Click Start → All Programs → Accessories → Remote Desktop Connection

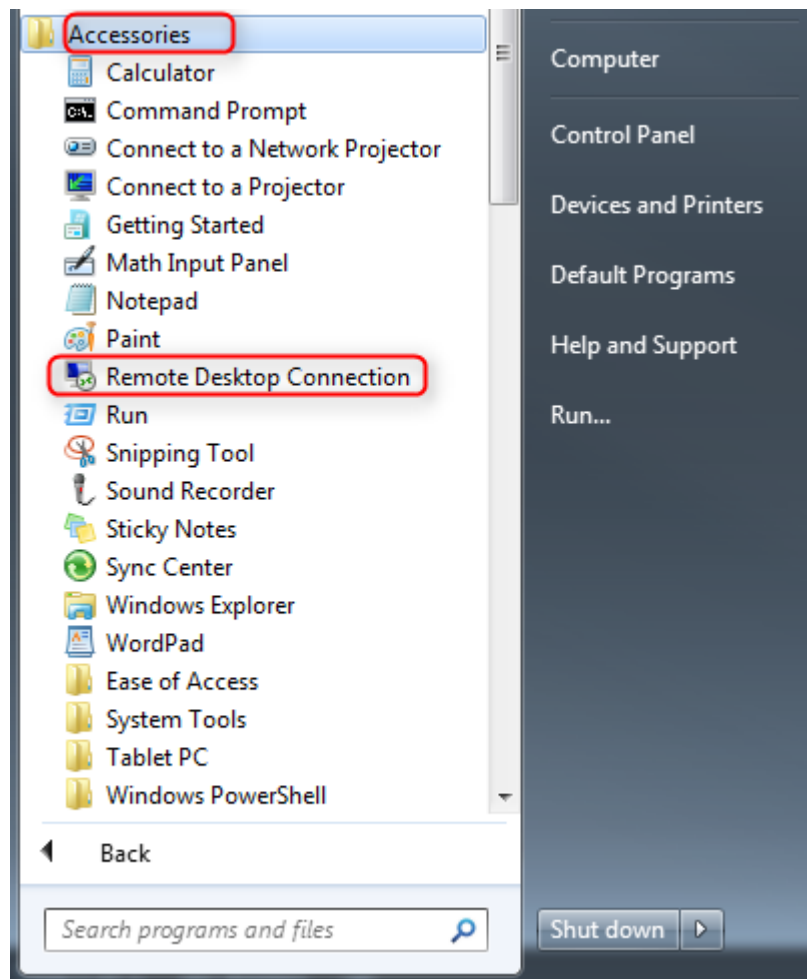


Fig. 1

2. Enter your workstation name or IP address (see Fig. 2)
 - a. In the *Computer* field enter your **workstation name or IP address** and click *Connect*

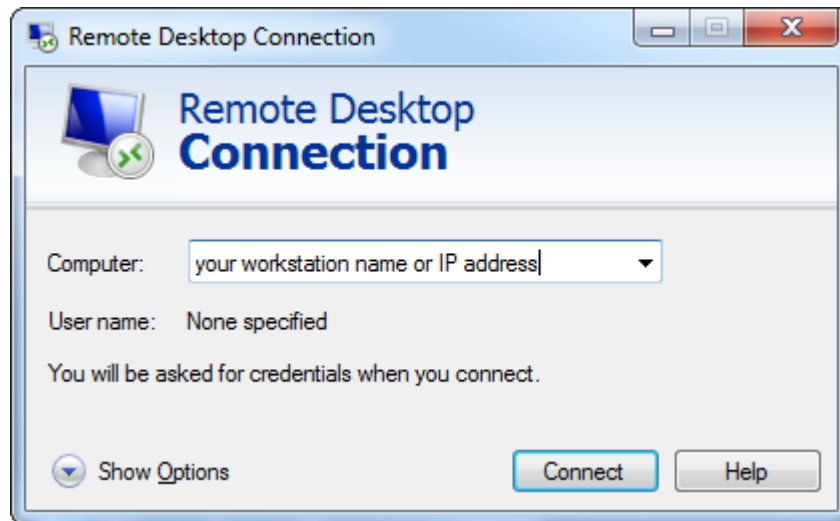


Fig. 2

3. Log on to the remote computer (see Fig. 3)
 - a. Enter your UWO username in the format *uwo\username*
 - b. Enter your password
 - c. Make sure the *Domain* field says UWO
 - d. Click OK

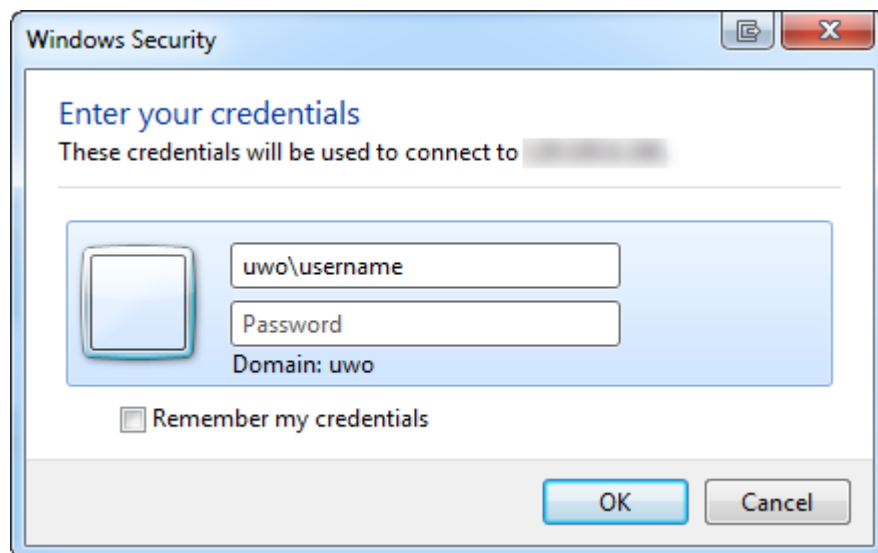


Fig. 3