

## How Do I... Map a Drive to the Cluster environment

---

### DESCRIPTION:

This procedure will walk you through mapping a drive to the Cluster environment.

### PROCEDURE:

1. Open a My Computer window and select *Tools...Map Network Drive*. (see Figure 1)
2. Select a Drive Letter to map to from the *Drive:* field of the Map Network Drive dialog box. (see Figure 2)
3. Enter correct path name in the *Folder:* field. (see Figure 2)
4. Click *Finish*.

Some typical Cluster paths that might need to be mapped:

- User home folders: **\\cluster\dept\home\username** where
- Department work folders: **\\cluster\dept\work**

*dept* is the department acronym for your specific department (e.g. ITS for Information Technology Services)

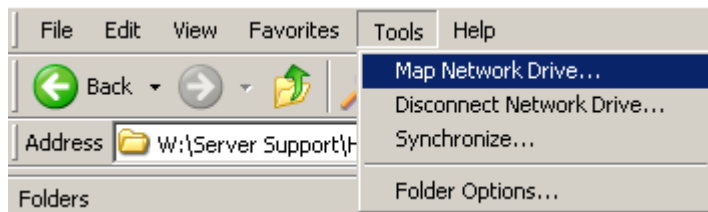


Figure 1: *Tools...Map Network Drive*.

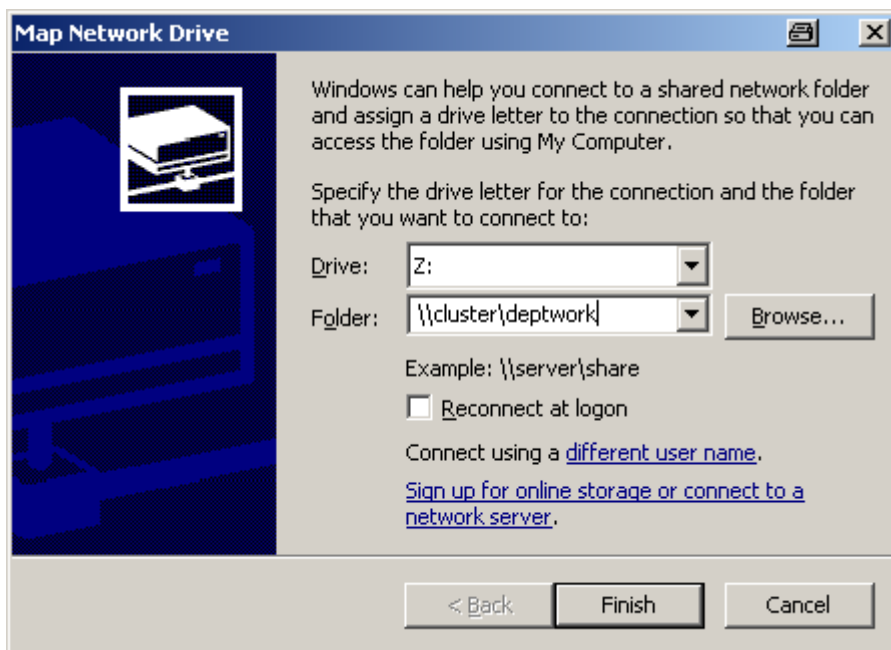


Figure 2: The Map Network Drive dialog box

## LAST REVISION:

November 2, 2015